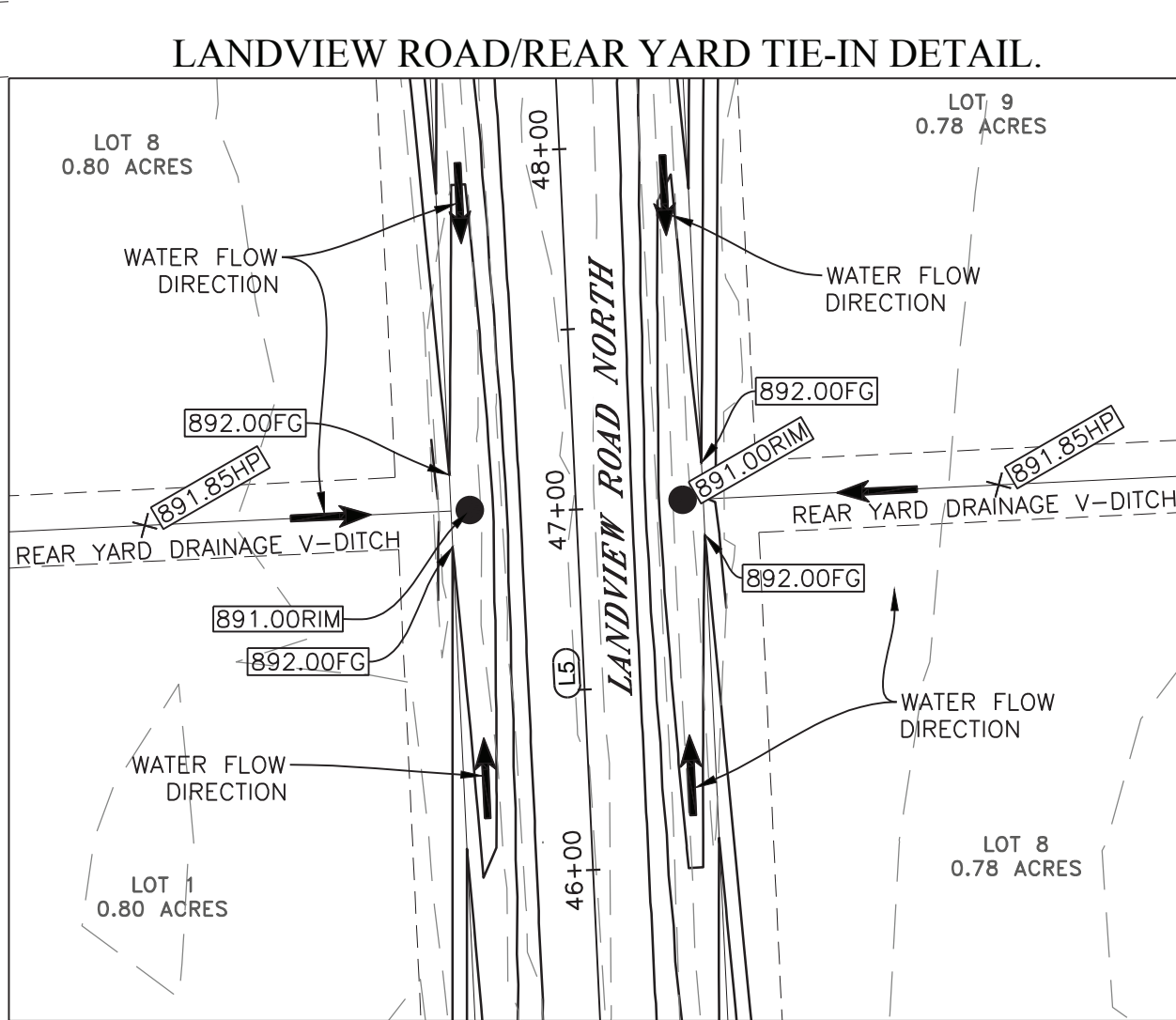
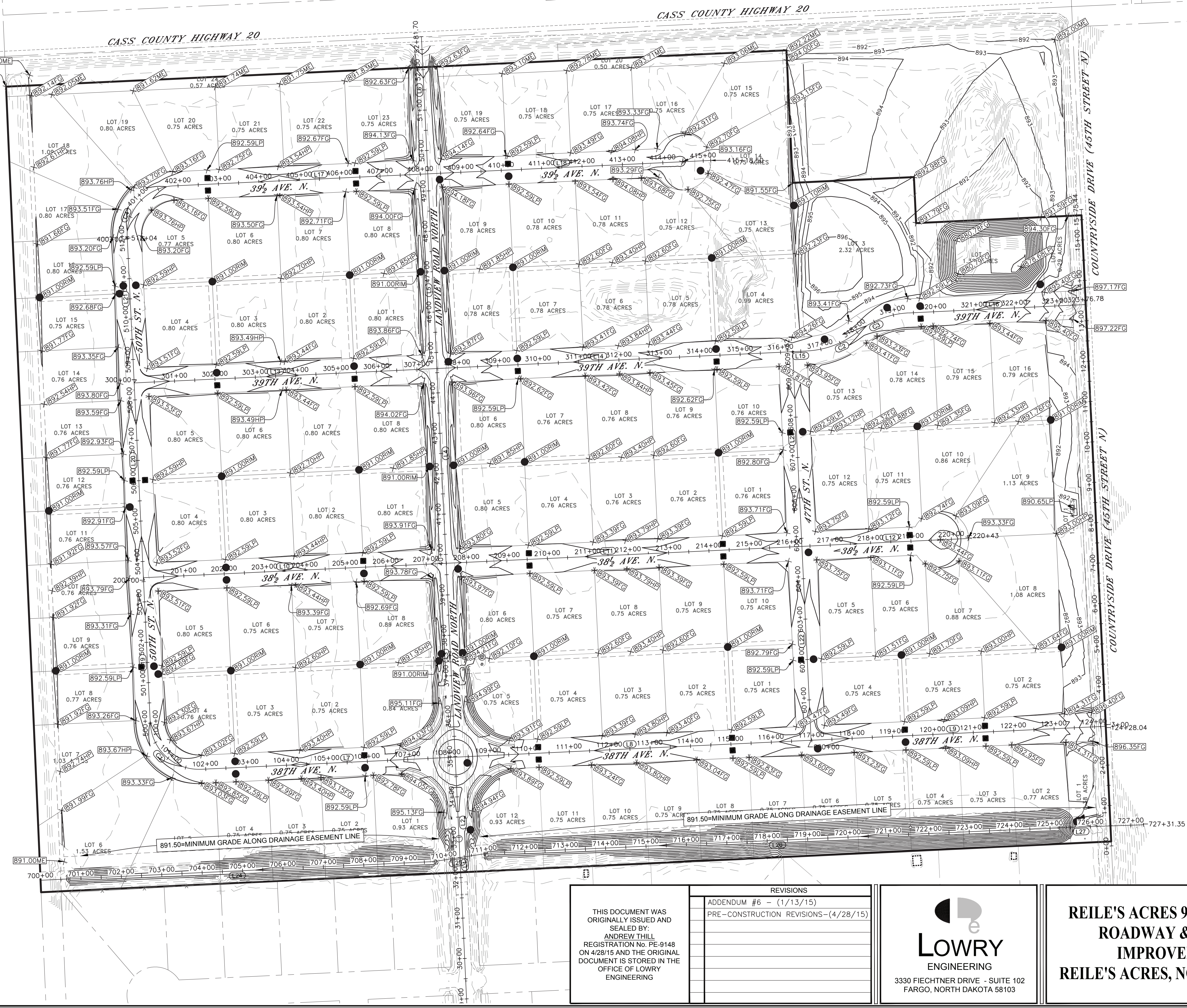


04/28/15 09:40:39AM Z:\Projects\13061 - Reile's AcresDrawings\13061 - Project\Design\13061-C\_Paving.dwg

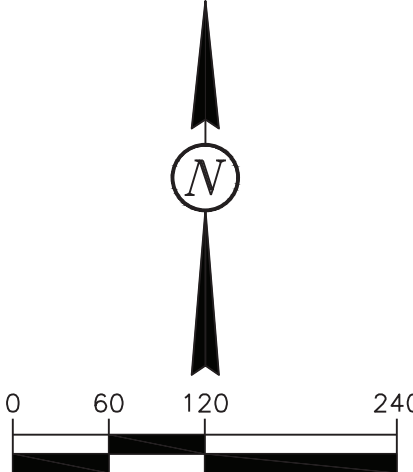


- NOTES:
- ELEVATIONS ARE FLOWLINE ELEVATIONS UNLESS OTHERWISE NOTED.
  - 5' CURB TAPER FROM HIGHBACK CURB TO RURAL SECTION AT LANDVIEW ROAD
  - ALL CURB IN ROUNDABOUT CENTER ISLAND IS OUTFLOW CURB
  - INTENT IS TO HAVE HALF OF YARD FLOW FROM LOTS ADJACENT TO COUNTY ROAD 20 TO GRADE TO EXISTING COUNTY ROAD 20 DITCH.

---	GRADE BREAK
- - - - -	OUTFLOW CURB
PC	POINT OF CURVATURE
LP	LOW POINT
HP	HIGH POINT
ME	MATCH EXISTING ELEVATION
FL	FLOW LINE
BVC	BEGINNING OF VERTICAL CURVE
EVC	END OF VERTICAL CURVE
GB	GRADE BREAK
FG	FINISH GROUND ELEVATION
RIM	STRUCTURE RIM ELEVATION
INV	STRUCTURE INVERT ELEVATION
R	RADIUS
TC	TOP OF CURB
MC	CURVE MIDPOINT


BENCHMARK: NGS MONUMENT: G47 / ELEV: 893.10  
NAVD 88 DATUM

BASIS OF BEARING: THE NORTH LINE OF REILE'S ACRES  
6TH ADDITION - ASSUMED BEARING  
S87°16'52"W



CALL BEFORE YOU DIG  
NORTH DAKOTA  
UTILITIES UNDERGROUND LOCATION SERVICE  
1-800-795-0555

THIS DOCUMENT WAS ORIGINALLY ISSUED AND SEALED BY: ANDREW THILL REGISTRATION No. PE-9148 ON 4/28/15 AND THE ORIGINAL DOCUMENT IS STORED IN THE OFFICE OF LOWRY ENGINEERING	REVISIONS
	ADDENDUM #6 - (1/13/15) PRE-CONSTRUCTION REVISIONS-(4/28/15)



**LOWRY**  
ENGINEERING  
3330 FIECHTNER DRIVE - SUITE 102  
FARGO, NORTH DAKOTA 58103

**REILE'S ACRES 9TH ADDITION  
ROADWAY & UTILITY  
IMPROVEMENTS  
REILE'S ACRES, NORTH DAKOTA**

LE JOB #	13061
PROJECT DATE:	4/20/14
CHECKED BY:	JML
DRAWN BY:	RJW
APPROVED BY:	AJT
SHEET:	40 OF 71

OVERALL  
GRADING PLAN

**C-40**