

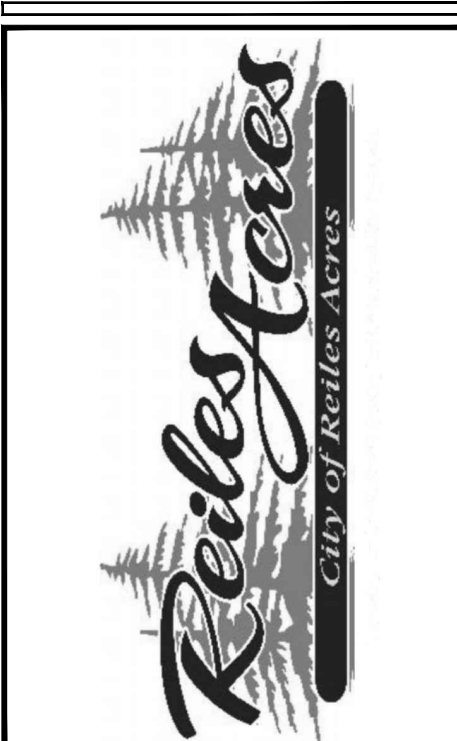
# 2017 ROADWAY IMPROVEMENT PROJECT NO. 3

35TH AVE N, LANDVIEW RD, & 32ND AVE N - ROADWAY & DRAINAGE IMPROVEMENTS  
CITY OF REILE'S ACRES, NORTH DAKOTA

**OWNER**  
CITY OF REILE'S ACRES  
4635 35TH AVENUE NORTH  
REILE'S ACRES, ND 58102  
CITYOFFICE@REILESACRESND.ORG

**CIVIL ENGINEER**  
ANDREW J. THILL, PE  
LOWRY ENGINEERING  
1111 WESTRAC DR., SUITE 108  
FARGO, ND 58103  
PH: 701-235-0199

**LOWRY**  
ENGINEERING  
1111 WESTRAC DRIVE - SUITE 108  
FARGO, NORTH DAKOTA 58103



**2017 ROADWAY IMPROVEMENT  
PROJECT NO. 3  
CITY OF REILE'S ACRES  
CASS COUNTY, NORTH DAKOTA**

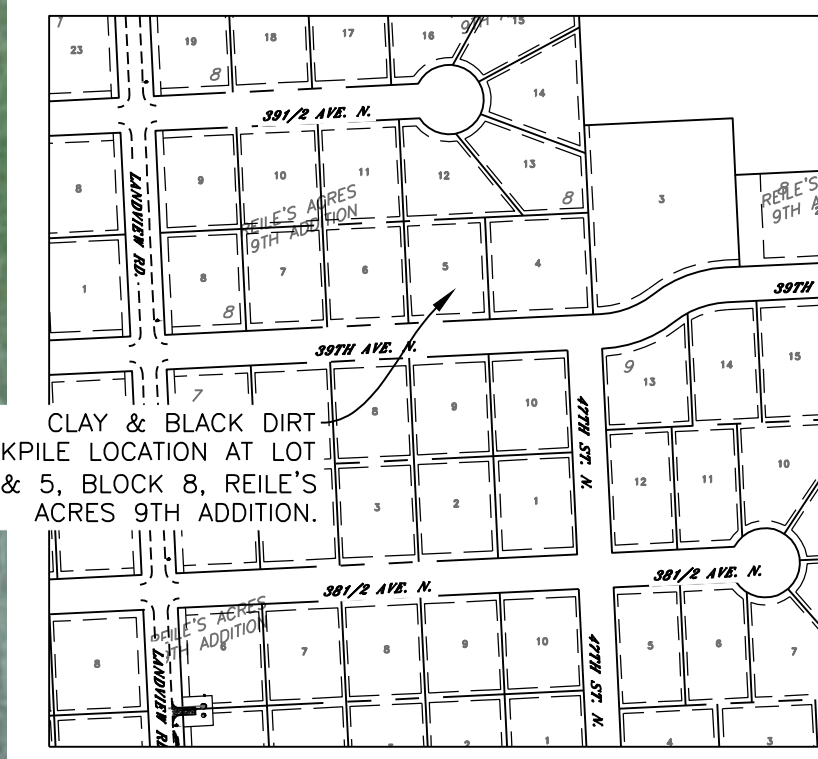
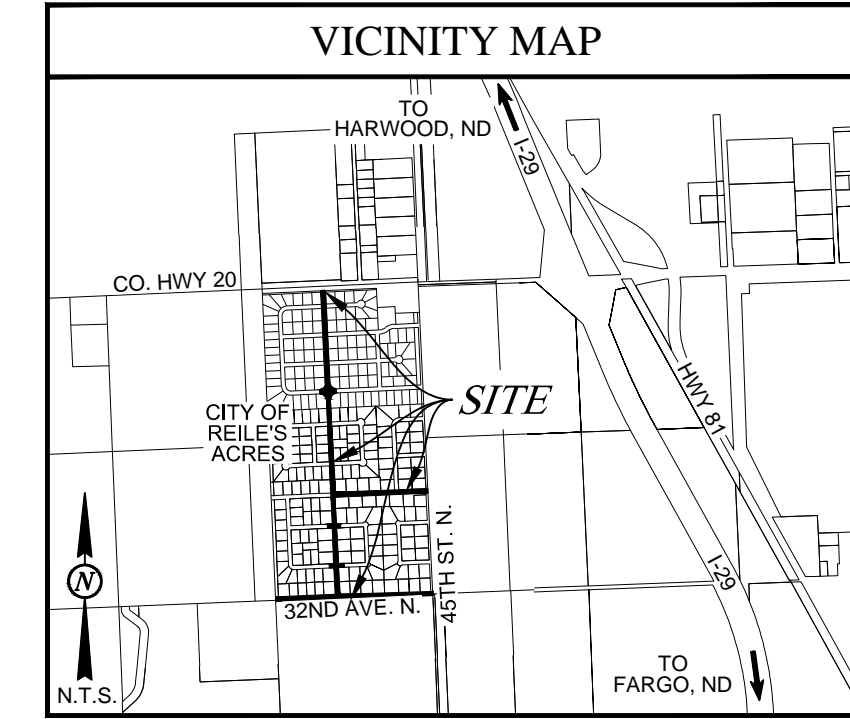
THIS DOCUMENT WAS  
ORIGINALLY ISSUED AND  
SEALED BY:  
ANDREW THILL  
REGISTRATION NO. PE-9148  
ON 12/27/2016 AND THE  
ORIGINAL DOCUMENT IS  
STORED IN THE OFFICE OF  
LOWRY ENGINEERING

LE JOB #	15016.5
PROJECT DATE:	12/27/2016
CHECKED BY:	CML
DRAWN BY:	CML
APPROVED BY:	AJT
SHEET:	1 OF 40

COVER SHEET  
&  
CONSTRUCTION PHASING  
**C-1**

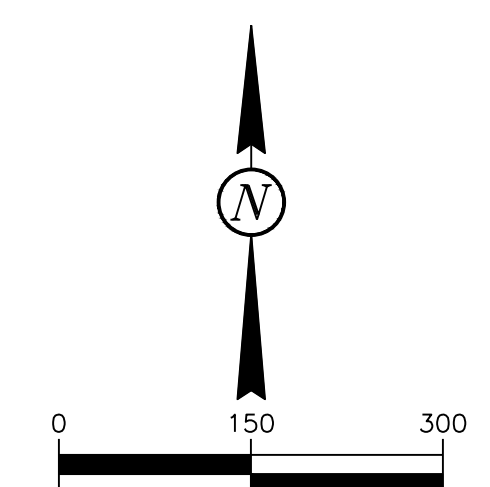
### PHASING LEGEND

- PHASE I WORK AREA
- PHASE I RESIDENT PARKING
- PHASE II WORK AREA
- PHASE II RESIDENT PARKING
- PHASE III WORK AREA
- PHASE III RESIDENT PARKING



### SHEET INDEX

C-1	COVER SHEET & CONSTRUCTION PHASING
C-2	GENERAL NOTES & LEGEND
C-3	MEASUREMENT & PAYMENT
C-4	MEASUREMENT & PAYMENT & PLAN QUANTITIES
C-5	LANDVIEW ROAD EX. SURVEY & DEMO PLAN
C-6	35TH AVE NORTH EX. SURVEY & DEMO PLAN
C-7	32ND AVE NORTH EX. SURVEY & DEMO PLAN
C-8	32ND AVE NORTH EX. SURVEY & DEMO PLAN
C-9	UTILITY SCHEDULE
C-10	LANDVIEW ROAD UTILITIES, STA: 11+00-19+00
C-11	LANDVIEW ROAD UTILITIES, STA: 19+00-27+00
C-12	LANDVIEW ROAD UTILITIES, STA: 27+00-EOP
C-13	35TH AVE NORTH UTILITIES, STA: 200+00-208+50
C-14	35TH AVE NORTH UTILITIES, STA: 208+50-EOP
C-15	32ND AVE NORTH UTILITIES, STA: 100+00-107+50
C-16	32ND AVE NORTH UTILITIES, STA: 107+50-112+00
C-17	LANDVIEW ROAD PAVING, STA: 11+00-19+00
C-18	LANDVIEW ROAD PAVING, STA: 19+00-27+00
C-19	LANDVIEW ROAD PAVING, STA: 27+00-EOP
C-20	35TH AVE NORTH PAVING, STA: 200+00-208+50
C-21	35TH AVE NORTH PAVING, STA: 208+50-EOP
C-22	32ND AVE NORTH PAVING, STA: 100+00-107+50
C-23	32ND AVE NORTH PAVING, STA: 107+50-114+50
C-24	32ND AVE NORTH PAVING, STA: 114+50-122+50
C-25	32ND AVE NORTH PAVING, STA: 122+50-EOP
C-26	ROUNDBOUT SIDEWALK PLAN
C-27	STRIPING PLAN
C-28	STRIPING PLAN
C-29	SIGNING PLAN
C-30	EROSION & SEDIMENT CONTROL - LANDVIEW RD
C-31	EROSION & SEDIMENT CONTROL - 35TH AVE NORTH
C-32	EROSION & SEDIMENT CONTROL - 32ND AVE NORTH
C-33	TRAFFIC CONTROL PLAN - PHASE 1
C-34	TRAFFIC CONTROL PLAN - PHASE 2
C-35	TRAFFIC CONTROL PLAN - PHASE 3
C-36	TRAFFIC CONTROL PLAN - DETOUR
C-37	TYPICAL SECTIONS
C-38	TYPICAL SECTIONS
C-39	DETAILS
C-40	DETAILS



**CALL BEFORE YOU DIG**  
**NORTH DAKOTA**  
UTILITIES UNDERGROUND LOCATION SERVICE  
1-800-795-0555

HORIZONTAL CONTROL:  
NAD83 - NORTH DAKOTA STATE PLANES - SOUTH  
ZONE INTERNATIONAL FEET - (NAD83-SPC-ND-SIF)  
VERTICAL CONTROL:  
NGS MONUMENT # G47  
NAVD 88 DATUM ELEVATION=893.10'



12/27/16 02:00:00 PM Z:\lowry shared files\projects\_2016\15016.5 - reile's roadway & drainage improvements\Drawings\15016.5 - project\Design\15016.5\_C.dwg